

631358

## CENTRAL INTELLIGENCE AGENCY

## INFORMATION REPORT

This Document contains information affecting the National Defense of the United States, within the meaning of Title 18, Sections 793 and 794, of the U.S. Code, as amended. Its transmission or revelation of its contents to or receipt by an unauthorized person is prohibited by law. The reproduction of this form is prohibited.

CONFIDENTIAL

COUNTRY	Poland	REPORT NO.	[REDACTED] 25X1A
SUBJECT	Warsaw Paper Industry Works, Cellulose and Paper Plant at Jeziorna	DATE DISTR.	28 July 1954
DATE OF INFO.	[REDACTED]	NO. OF PAGES	3
PLACE ACQUIRED	[REDACTED]	REQUIREMENT NO.	RD
		REFERENCES	

25X1C

25X1X

1. The cellulose and paper plant of the Warsaw Paper Industry Works (Fabryka Celulozy i Papieru, Warszawskie Zaklady Papiernicze) is located in Jeziorna (R53/L07), 12 km south of Warsaw. It is subject to the authority of the Warsaw Paper Industry Works (Warszawskie Zaklady Papiernicze).
2. The administration of this plant is broken down as follows: chief director; technical manager (chief engineer); Work's Council; Party secretary and P.O.P. (Basic Party Organization); personnel section; planning office; technical office; and the bookkeeping and payment office.
3. This plant is an old Polish factory, at present undergoing an important expansion. A new plant for the production of cardboard is under construction.
4. The plant consists of the following buildings:
  1. two-story concrete building, 8 by 15 by 6 m. The gatekeeper's room and quarters of the Industrial Guard are on the first floor; the offices of the Party secretary and P.O.P., the personnel section and the work's council are on the second floor.
  2. one-story concrete building, 6 by 8 by 3 m, garage (2 trucks and 1 passenger car are located there).
  3. concrete building, 20 by 40, by 10 m, boiler room.
  4. chimney, diameter 6 m, height over 30 m.
  5. building, 40 by 30 by 10 m, containing paper-making machinery.
  6. one building, divided up into the following halls:

CONFIDENTIAL

25X1

CONFIDENTIAL

25X1A

- 2 -

- 6a. hall, 30 by 15 by 20 m (three stories); first floor: room for the installation of new machines; second floor and third floor; pumps, old German makes.
- 6b. hall, 20 by 40 by 10 m, containing a new paper machine, of Polish make, supplied by the Paper Machine Plant at Cieplice (Q53/P08) (Zaklady Budowy Maszyn Papierniczych w Cieplicach). It is used for the production of tissue paper (bibulkowy).
- 6c. hall, 20 by 40 by 10 m, electricians workshop and storage room for new electric motors.
- 6d. hall, 20 by 40 by 10 m, containing an old paper machine of German make Hauboldt used for the production of parchment paper.
- 6e. hall, 20 by 40 by 10m, containing an old German Hauboldt machine used for the production of stationery.
- 6f. hall, 20 by 40 by 10 m, small paper machine used for the production of tissue paper.
- 6g. hall, 20 by 40 by 10 m, containing three machines for the pressing of paper.
- 6h. hall, 80 by 30 by 10 m, containing storage space for white cellulose.
- 6i. hall, 60 by 40 by 15 m, storage of paper ready for shipment.
- 6k. hall, 140 by 40 by 15m, two stories; first floor: packing - room; second floor: room for production of copy books.
- 6 l. hall, 30 by 20 by 15, containing old dismantled paper machine, Hauboldt type.
- 6m. hall, 50 by 15 by 10 m, containing a Hauboldt machine for the production of millimeter scaled paper for technical drawings.
- 7. building, 40 by 30 by 8 m, containing a paper-cutting machine.
- 8. building, 30 by 20 by 8 m, containing a machine for the production of parchment paper.
- 9. building, 20 by 15 by 10 m, containing an hydraulic scraping machine (diameter of the stone: 1m).
- 10. building, 40 by 30 by 10 m, containing the joiner's workshop.
- 11. shower room for workers; one-story concrete building, 10 by 20 by 6 m.
- 12a. mechanic's workshop, 30 by 30 by 10 m.
- 12b. forge, 30 by 10 by 10 m.
- 12c. welding machine.
- 13a. hall, 20 by 10 6m, fire guard's station.
- 13b. gasoline and oil storage, 20 by 10 by 6m.
- 14. two-story concrete building containing the following offices: planning office, technical office, office of chief director, technical manager (chief engineer), bookkeeping and payment office.
- 15. laboratory, 15 by 6 by 6 m.
- 16. new cardboard production plant under construction.

ILLEGIB

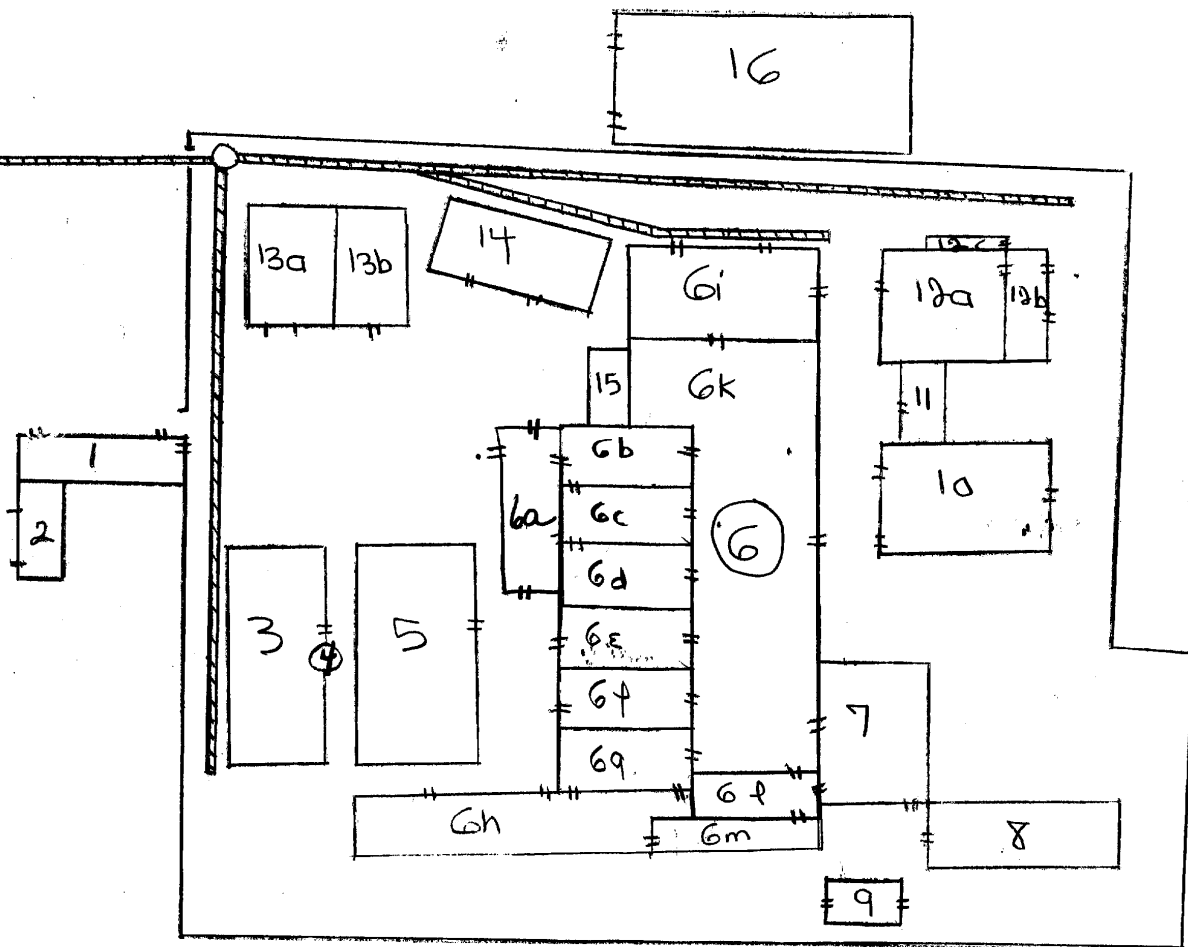
CONFIDENTIAL

25X1A

- 3 -

5. The production of subject plant consists of: tissue paper; stationery; paper for technical drawings (millimeter-scaled paper); parchment paper; and cellulose from spruce lumber. The machines are of old German make except for one new machine for the production of tissue paper. The latter is an M.P.V. supplied by the paper machine plant at Cieplice. The cylinders, press and rolls move on roller bearings. The plant has a railway siding from the station at Jeziorna.
6. The plant is surrounded by a hedge, ca. two m high. The site is guarded by a detachment of the Industrial Guard. The workers have passes with photos. Workers who are not permanently employed have temporary passes, valid for one month. They can only be used together with the Dowod Osobisty (Identity Document). The workers are also searched quite often, since they could easily smuggle out completed products.

Warsaw Paper Industry Works, Cellulose and Paper Plant at Jeziorna:



25X1A